



Hello to all our members, volunteers and supporters, and welcome to another newsletter.

Since our last email we've been busy planning. We have a volunteer meeting on Thursday 10 April and an outing to Classic Flyers in Tauranga on Thursday 1 May. You'll find all the details here in the newsletter. We also continue to work on celebrations for our 10th anniversary. Ruth Plank is kindly collating stories and would love to hear from anyone who would like to share something, and we're keen to get photos of KADAP events and outings through the years so let us know if you have some!

We had a great turnout for our first monthly coffee morning at Bert Hamilton Hall, with lots of chatting, and a few rounds of 'Bananagrams' and 'Connect 4'. Our next one will be held on Thursday 27 March from 10 until 11.30am. Board games aren't compulsory and everyone is welcome!

With kind regards,  
Karen

At our last monthly meeting, Wendy from Hearing Bay of Plenty gave an interesting and useful talk about support and resources that are available. This included apps like Live Transcribe, which is a free app that turns spoken words into text in real time. Call the office if you would like some help to set this up on your phone.



## FUTURE MEETINGS

Everyone is welcome at our meetings. Don't forget the 'bring, swap or take' table and something to share for afternoon tea.

### Monday 10 March, 1pm at the Concert Chamber

Lyndal Kennedy, Area Coordinator for Neighbourhood Support Kawerau District, will be speaking about her role and sharing useful information about Neighbourhood Support.

### Monday 14 April, 1pm at the Concert Chamber

We will be joined by Jo Wills from Sustainability Options. She will tell us about their work and give us some helpful hints and tips on keeping our homes warm and dry this coming winter.

## Selling locally in Kawerau!

- ✔ Free Marketing Package
- ✔ Low Fees & No Upfront Costs
- ✔ Top Local Service

### Wayne Jackson

027 728 3355  
wayne.j@arizto.co.nz

Arizto Ltd. Licensed REAA 2008



Proud Sponsor  
of the KADAP Inc.  
Newsletter



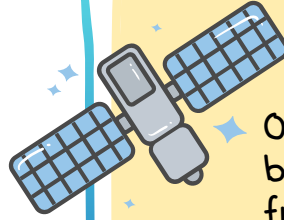


Eastern  
Bay of Plenty

### Kawerau Carer Hui

Thursday 20 March  
Thursday 17 April  
Thursday 15 May  
Thursday 12 June  
Thursday 10 July  
Thursday 7 August  
Thursday 18 September  
Thursday 16 October

Meet at Bert Hamilton Hall, 4 Porritt Drive  
10.30am until 12 o'clock

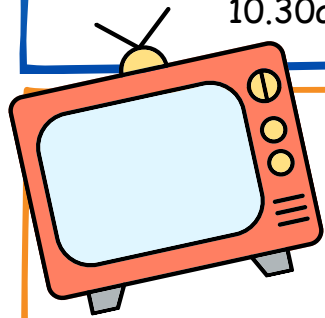


## VOLUNTEER MEETING

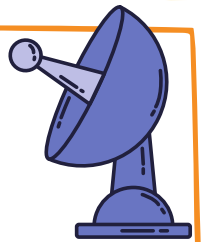
Our next volunteer meeting will be held on Thursday 10 April from 9.30 until 11.30am, at Bert Hamilton Hall.

All volunteers are welcome, whatever task/s you do to help KADAP and our members.

Morning tea and chocolate fish will be provided.



## USEFUL INFORMATION ABOUT THE FREEVIEW TV SIGNAL



In early April the Freeview satellite TV service has to transition to another satellite. Therefore, TV reception may be disrupted. Viewers may notice some signal interruption at times as they ready for the changer and make tests. For others once the change is made some viewers may lose their TV signal altogether.

This will depend on what you are using and how the signal is received.

If you are using a Smart TV with the Satellite receiver built into it, then the change should be automatic and of no concern.

If you are using a TV box which is Freeview approved, the changes should also be automatic.

If you are using an imported or non-Freeview certified TV box, then changes will affect El Jazeera and Sky Open and will require a retune by a competent person to still receive these two channels.

If your TV box is quite old it may only have the DVB-S protocol and will not be compliant with the new DVB-S2 protocol after the change, so you will need a new TV box to continue to receive TV. A good indicator is that if you are unable to get Sky Open or El Jazeera now it will not be compliant with the new protocol and will need to be replaced.

Most new TV sets have a satellite tuner built into them nowadays so if you buy a new TV just check that that is the case and any new Freeview Receiver available from the larger chain Stores will be compatible - as they will carry the Freeview Accreditation

If you have a TV box and not certain about it, please ring the office leaving your name and phone number and someone will get in touch with you.

If you have Sky TV this does not apply to you. Sky will be looking after its own customers

TV received over the internet such as TV1 Plus, You Tube, ThreeNow etc will not be affected.

# OUTING

Thursday  
1st May

We will be visiting Classic Flyers Aviation Museum, Jean Batten Drive, Mount Maunganui, on Thursday 1 May. We will be departing the New World car park at 9am.

The cost is \$10 per person, which includes transport via minibus and entry to the Aviation Museum. There is an onsite cafe. Morning tea and/or lunch will be at member's own expense.

For those who enjoy shopping there will also be the opportunity to visit the Waipuna Hospice shop on MacDonald Street, Mount Maunganui.

Contact the office if you would like to come along, and please ensure that you have paid your \$10 at the office by Monday 28 April.



Classic Flyers NZ.com

## DO YOU KNOW?

1. How many minutes in a full week?
2. How many dots are on a pair of dice?
3. The fourth letter of the Greek alphabet?
4. The only country's flag that doesn't have four sides?
5. What firm is known for the interlocking "C" logo?
6. What do you call it when a bowler makes three strikes in a row?



One of our members has this commode chair that they don't need. If you would like it please contact Tim on 027 359 5384.



This wheelchair has been gifted to us to be passed on to someone who needs it. Please contact the office if you would like it.

We have also been offered a three-wheeled walker, so please call if you are interested in that.



## MEAL DELIVERIES

We are now collecting and distributing left over school meals on Thursdays and Fridays. If you would like to receive some meals, please call the office.

We are also looking for two regular volunteers, one for Thursday afternoon and one for Friday afternoon, to help with this service. Please call the office or speak to Jean Noffke if you can help.



## SAFETY NOTICE

Do you have a wall-mounted Serene heater in your bathroom? Model numbers S2068, S207T, and S2069 do not meet New Zealand's safety standards

Check the top side of your heater. If the model number says Serene S2068, stop using it now. This heater was recalled in April 2024 due to serious fire risk.

If you can't unplug it from a wall socket, you should arrange for removal by an electrician.

The photo here is of the Serene S2068. If you need more information please ask at the office, or check out these websites:

[www.business.govt.nz](http://www.business.govt.nz)  
[www.productsafety.govt.nz](http://www.productsafety.govt.nz)



## ARE YOU ELIGIBLE FOR A RATES REBATE?

The Rates Rebate Scheme is a government funded scheme designed to benefit homeowners on low incomes. The income threshold this year is \$31,510.00 but if your income is above this you may still be entitled to a partial rebate. The maximum rebate allowed is \$790.00.

If you want to apply you must be the legal ratepayer for the property and it must be your usual place of residence from 1 July 2024.

You can check your eligibility by going to [www.govt.nz](http://www.govt.nz) and searching 'rates rebate'. Alternatively, you can ask for help at the council offices or pop into the KADAP office and we can help you. Applications for this year must be made by 30 June 2025.

DO YOU SUBSCRIBE TO THE OFFICE FOR SENIORS NEWSLETTER? IT'S A GREAT SOURCE OF INFORMATION. YOU CAN SIGN UP AT:

[WWW.OFFICEFORSENIORS.GOV.T.NZ/ABOUT-US/CONTACT-US](http://WWW.OFFICEFORSENIORS.GOV.T.NZ/ABOUT-US/CONTACT-US)

## Hats Off



to JDC Refrigeration and Electrical! They offer air con servicing at \$99 each (usually \$161) for KADAP members and will not charge travel costs to members for call outs for faults.

Call them on 027 323 1639



**KADAP Office hours: 9am to 3pm Mon to Fri**

**Email: [office@kadap.org.nz](mailto:office@kadap.org.nz) or [coordinator@kadap.org.nz](mailto:coordinator@kadap.org.nz)**

**Phone: 07 219 3940 (Office) or Mobile: 027 503 8125**

Do you know? Answers: 1. 10,080 2. 42 3. Delta 4. Nepal 5. Chanel 6. Turkey